



Apartment

THE STEEPLES, 1 CHURCH HOUSE APARTMENTS CHURCH LANE, SHEEPY MAGNA, ATHERSTONE,

PCM

£850 PCM

FEATURES

- Top Floor Apartment
- Sheepy Magna
- Beautiful Communal Grounds
- Stunning Views
- Secluded Private Location
- Two Bedrooms
- Modern Kitchen
- Unfurnished



HOWKINS &
HARRISON

2 Bedroom Apartment located in Atherstone

This fabulous, NEWLY DEORATED top floor apartment occupies an idyllic spot situated within the manicured grounds of a former 17th century vicarage in the beautiful village of Sheepy Magna. With NEW CARPETS & FLOORING throughout, the property boasts superb rural views, two good size bedrooms, one with fitted wardrobes, a light and airy living room, a modern fitted kitchen and principal bathroom, together with use of the peaceful ground floor communal conservatory and plentiful off road parking. NEW High Heat Retention heating. EPC D. Council Tax B. Unfurnished. Minimum annual household income £26,000. Deposit £951. Holding Deposit £190. Available within a week of application Fully managed by Howkins & Harrison

Call us on

01827 718021

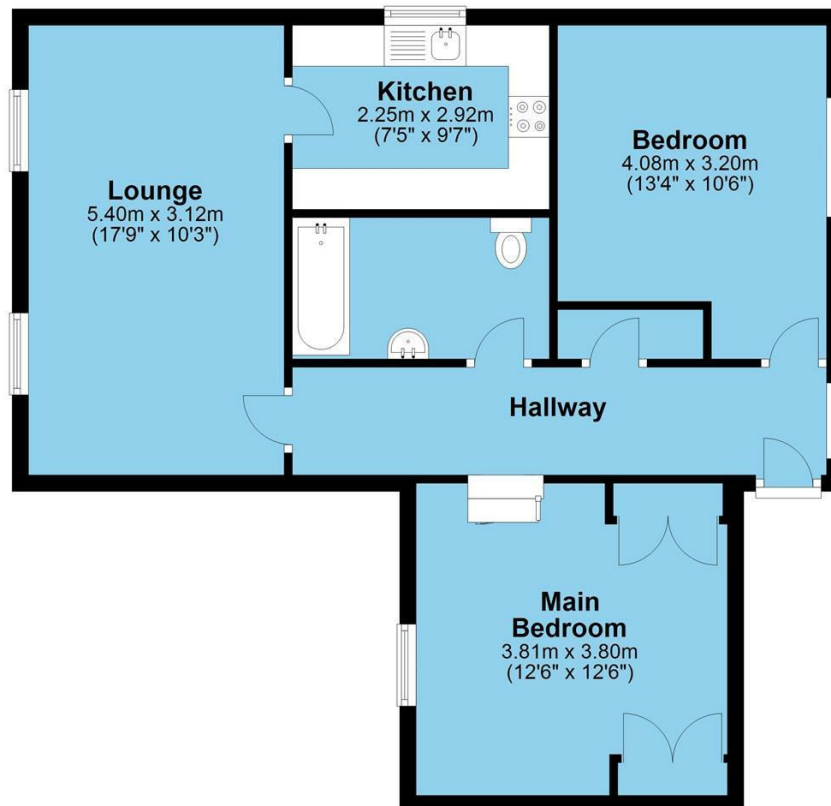
athletts@howkinsandharrison.co.uk

<https://howkinsandharrison.co.uk/>

Council Tax Band

B

Ground Floor



Energy Efficiency Rating		Current	Potential
<i>Very energy efficient - lower running costs</i>			
(92 plus) A			
(81-91) B			
(69-80) C			
(55-68) D		60	63
(39-54) E			
(21-38) F			
(1-20) G			
<i>Not energy efficient - higher running costs</i>			
England & Wales		EU Directive 2002/91/EC	

Agents Note: Whilst every care has been taken to prepare these particulars, they are for guidance purposes only. All measurements are approximate and are for general guidance purposes only and whilst every care has been taken to ensure their accuracy, they should not be relied upon and potential buyers are advised to recheck the measurements.

**HOWKINS &
HARRISON**